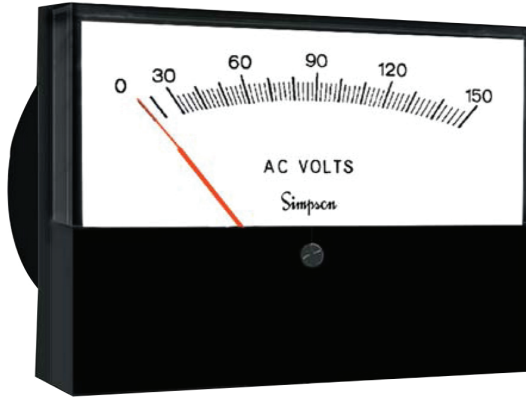


Designer Style Analog Panel Meters



- *Clean, uncluttered design offers maximum visibility in minimum required height*
- *Glass window for optimum viewing*
- *Rugged black plastic case*
- *Red knife-edge pointer for precision readability*

For Specifications and Dimensions see last page

Ordering Information

AC Ammeters, Iron-Vane Movement			
Range	Approx. Impedance (Ohms) @ 60 Hz	Model / Size and Catalog Number	
		3-1/2" Model 553	4-1/2" Model 554
0-1	.213	15049	15121
0-5	.008	15050	15120
0-10	.004	15052	15122
0-15	.0025	15051	15123
0-25	.002	15053	15125
0-50	.001	15054	15124
0-100	.008	15056 †	15127 †
0-150	.008	15057 †	15128 †

† Requires external current transformer

AC Voltmeters, Iron-Vane Movement			
Range	Approx. Impedance (Ohms) @ 60 Hz	Model / Size and Catalog Number	
		3-1/2" Model 553	4-1/2" Model 554
0-150 *	25,000	15060	15130
0-250 *	41,166	15061	15131
0-300 *	50,000	15062	15132

* Rectifier movements are available on special order

Designer Style Analog Panel Meters

Ordering Information

DC Microammeters, Self-Shielding Movement			
Range	Approx. Impedance (Ohms) @ 60 Hz	Model / Size and Catalog Number	
		3-1/2" Model 523	4-1/2" Model 524
0-50	1800	15017	15087
0-100	1800	15019	15089
0-200	1100	15021	15091
0-500	90	15022	15093
25-0-25	1800	15023	15094
50-0-50	1800	15025	15095
100-0-100	1100	15027	15097
500-0-500	43	15024	15096

DC Ammeters, Self-Shielding Movement			
Range	Approx. Impedance (Ohms) @ 60 Hz	Model / Size and Catalog Number	
		3-1/2" Model 523	4-1/2" Model 524
0-1	.050	15031	15101
0-3	.0166	15032	15102
0-5	.010	15033	15103
0-10	.005	15030	15100
0-15	.0033	15034	15104
0-25	.0020	15035	15105
0-50	.001	15036	15106

DC Taut-Band Microammeters, Self-Shielding Movement			
Range	Approx. Impedance (Ohms) @ 60 Hz	Model / Size and Catalog Number	
		3-1/2" Model 523T	4-1/2" Model 524T
0-15	1960	15014	15092
0-25	2100	15015	15085

DC Millivoltmeters, Self-Shielding Movement			
Range	Approx. Impedance (Ohms) @ 60 Hz	Model / Size and Catalog Number	
		3-1/2" Model 523	4-1/2" Model 524
0-50	10.0	15048	15118

DC Milliammeters, Self-Shielding Movement			
Range	Approx. Impedance (Ohms) @ 60 Hz	Model / Size and Catalog Number	
		3-1/2" Model 523	4-1/2" Model 524
0-1	43.0	15000	15070
0-5	2.0	15001	15076
0-10	10.0	15002	15077
0-50	2.0	15003	15078
0-100	1.0	15010	15080
0-200	.5	15004	15079
0-300	.33	15012	15081
0-500	.2	15013	15082

DC Voltmeters, Self-Shielding Movement			
Range	Approx. Impedance (Ohms) @ 60 Hz	Model / Size and Catalog Number	
		3-1/2" Model 523	4-1/2" Model 524
0-5	1,000 Ohms Per Volt	15038	15108
0-10		15039	15109
0-15		15040	15110
0-30		15042	15112
0-50		15044	15114
0-100		15045	15111
0-150		15046	15116

Designer Style Analog Panel Meters

Specifications	
Accuracy	± 2% F.S.
Movement	AC/Iron-vane, magnetically damped, DC Annular
Tracking	± 3%
Response Time	1.5 seconds maximum
Overload (1 sec.)	10 times F.S.
Overload (Continuous)	1.5 times F.S.
Repeatability	2% for standard meters, 0.5% for taut band meters
Dial	Sharp clear scale. Each dial arc is calibrated to track the specific type of movement used
Case	High Density black plastic
Resistance	± 15% of meter impedance
Operating Temperature	-4°F to +149°F (-20°C to +65°C)
Pointer	Red, knife-edge
Scale Length	Model 523: 2.92" (74.2mm) Model 524: 3.25" (82.5mm) Model 553: 2.69" (68.3mm) Model 554: 2.84" (72.1mm)
Net Weight	Model 523: 9oz. (0.26kg) Model 524: 10oz. (0.28kg) Model 553: 5oz. (0.14kg) Model 554: 6oz. (0.17kg)

Dimensions

